



MEETING SPACE OVERVIEW

COURTLAND GRAND HOTEL

Guestrooms: 306 kings/ 400 doubles / 57 suites

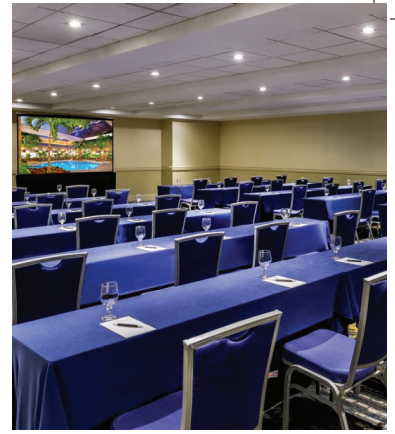
Number of Meeting Spaces: 49 rooms and 3 ballrooms Maximum Group Size: 1,600

Total Event Space: 100,000 sq. ft./ 9,290 sq. m.

Additional spaces for meetings and events, not displayed here, may also be available. Contact your hotel representative for more information.

WWW.COURTLANDGRANDHOTEL.COM







COURTLAND GRAND
HOTEL

TRANSFORMATIVE DESIGN

Connect, collaborate and build fresh perspectives and new ideas within our thoughtfully designed meeting spaces, featuring 100,000 square feet of event space. We've incorporated thoughtful, evidence-based design and smart, integrated technologies into collaborative environments where ideas flow freely and creativity is unleashed. Design meetings for ten to 1,600 with 49 flexible breakout spaces, accessible loading docks, an exclusive, private cultural event kitchen for preferred Ethnic Caterers, and a dedicated event staff whose knowledge and experience are unsurpassed. Discover our three expansive ballrooms for larger events and our illuminating, climate-controlled courtyard with a retractable glass roof for more intimate events, including cocktail receptions.

GET MORE OUT OF YOUR STAY

A unique blend of modern design and Southern charm, our expansive hotel provides you with an ideal location and elevated environment for your meetings and events. Stay connected with wireless High Speed Internet Access, available in guest rooms, suites and all public spaces, including our internet café. Experience the divine flavors of Southern style cuisine with a healthy European twist at Fandangles. After a long day, step into the oasis of our Garden Courtyard that features a retractable glass roof and take a dip in our heated pool. Take advantage of a private meeting room where you can connect with colleagues or catch up on work.

EXPLORE ATLANTA

Just steps from our hotel, discover some of Atlanta's best attractions. Network with people from around the world at the Georgia World Congress Center, a 3.9 million-square-foot convention space. Discover striking historical facts about the Civil Rights Movement at the Martin Luther King Jr. National Historic Site. Go for a stroll in Centennial Olympic Park®, a landmark from the city's 1996 Olympic Games, and get a bird's-eye view of the 21-acre Olympic park from the top of the SkyView Atlanta™ Ferris wheel. Go for a run or bike ride on the completed trails of the Atlanta Beltline, a former railway corridor being converted into a 22-mile continuous path that encircles the city. Immerse yourself in the captivating world of marine life at the Georgia Aquarium, witness awe-inspiring underwater displays, and gain a deeper appreciation for the importance of ocean conservation. Keep the adventures going and head to the Mercedes-Benz Stadium to see one of the NFL's leading teams, the Atlanta Falcons or If MLS is your thing, Atlanta United. Or for a more relaxing afternoon, listen to some of today's most talented artists perform live at State Farm Arena. Getting thirsty? Refresh with a Coke® at the World of Coca-Cola®, where you can sample over 100 Coca-Cola flavors from all over the globe. And for dinner, you're not short of options being in the epicenter of Atlanta's culinary scene. Explore Ponce City Market's Food Hall or Krog Street Market's illustrious dining scene.



**COURTLAND GRAND
HOTEL**

LEVEL 3

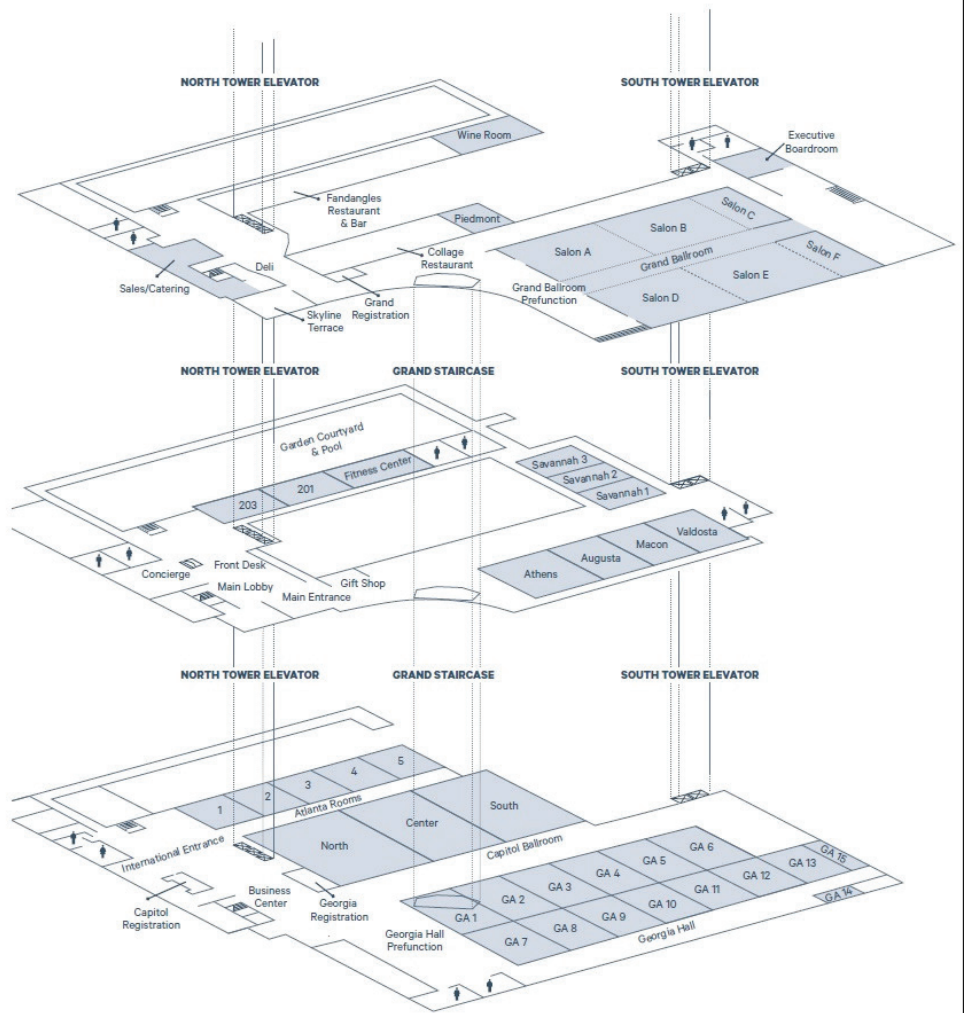
Grand Ballroom
Grand Pre-Function
Executive Boardroom
Piedmont
Skyline Terrace

LEVEL 2

Athens
Augusta
Macon
Valdosta
Savannah Room
Hospitality Suites
Garden Courtyard

LEVEL 1

Registration Desks
Atlanta Pre-function
Atlanta Ballroom
Capitol Pre-Function
Capitol Ballroom
Georgia Pre-function
Georgia Hall
Conference Rooms

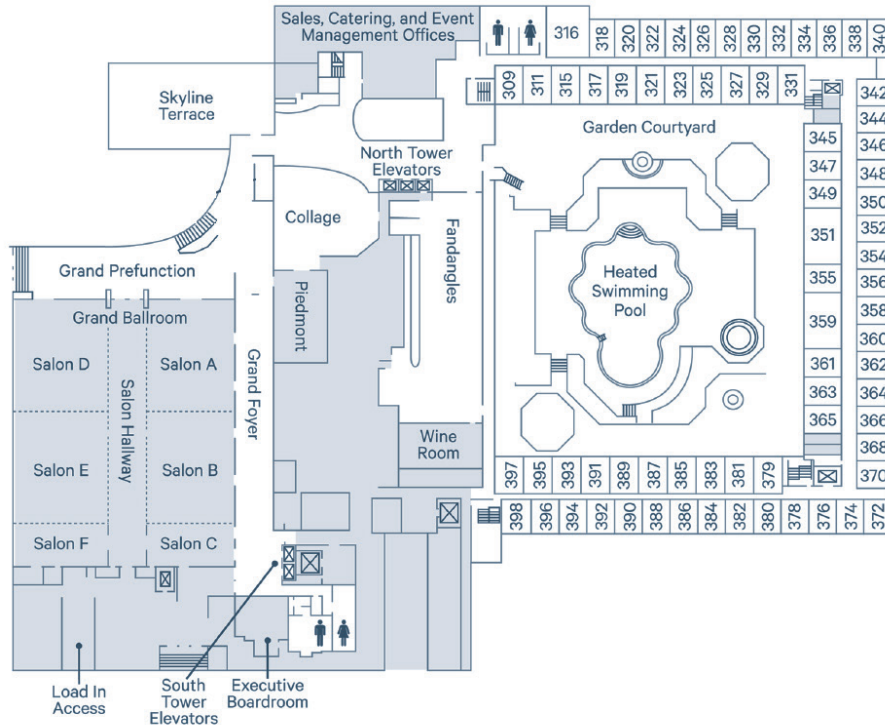




COURTLAND GRAND
HOTEL

MEETING SPACE LEVEL 3

- Grand Ballroom
- Grand Pre-Function
- Executive Boardroom
- Piedmont
- Skyline Terrace



ROOM DIMENSIONS & SEATING CAPACITY

	SQ FEET	SQ METERS	DIMENSIONS	HEIGHT	BANQUET	THEATER	RECEPTION	CLASSROOM	U-SHAPE	SQUARE	8X10 BOOTHS	6' TABLE TOPS
SOUTH TOWER BOARDROOM*	828	77	23' x 36'	-	-	-	-	-	-	-	-	-
GRAND BALLROOM	15,080	1,401	130' x 116'	18'	1,050	1,600	1,600	700	-	-	79	216
GRAND PRE-FUNCTION	6,290	584	-	14'	-	-	-	-	-	-	-	-
SALON A	2,592	241	54' x 48'	18'	200	360	200	150	38	52	-	54
SALON B	2,640	245	55' x 48'	18'	130	360	200	150	42	56	-	54
SALON C	1,008	94	48' x 21'	12'	30	80	-	36	24	28	-	-
SALON D	2,592	241	54' x 48'	18'	200	360	200	150	38	52	-	54
SALON E	2,640	245	55' x 48'	18'	130	360	200	150	42	56	-	54
SALON F	966	90	46' x 21'	12'	30	80	-	36	24	26	-	-
SALON A-B	5,232	486	109' x 48'	18'	400	660	400	288	72	86	-	-
SALON B-C	3,648	339	48' x 76'	18'	240	410	200	141	-	-	-	-
SALON A-C	6,240	580	130' x 48'	18'	460	740	400	300	-	-	-	-
SALON D-E	5,232	486	109' x 48'	18'	400	680	400	288	72	86	-	-
SALON E-F	3,648	339	48' x 76'	18'	240	410	200	141	-	-	-	-
SALON D-F	6,240	580	130' x 48'	18'	460	740	400	300	-	-	-	-
SALON HALLWAY	3,432	319	130' x 21'	-	-	-	-	-	-	-	-	-
EXECUTIVE BOARDROOM	522	48	29' x 18'	-	-	-	-	-	-	-	-	-
PIEDMONT	1,040	97	40' x 26'	10'	50	60	180	50	20	30	-	-
SKYLINE TERRACE	1,391	129	-	-	60	96	100	-	-	-	-	-

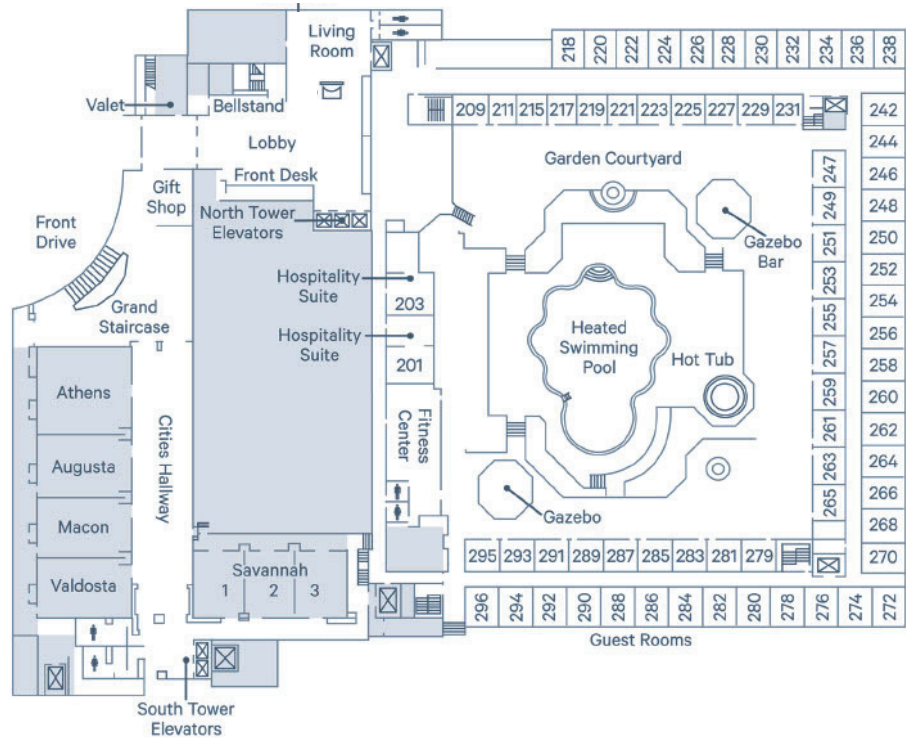
Meeting room sets reflect basic audio/visual consisting of a screen and a projector. This document contains approximate measurements and square footage that are for illustrative purposes only. We cannot guarantee the floor plan accuracy or completeness, therefore encourage you to review the space to make sure it is suitable for your event.



**COURTLAND GRAND
HOTEL**

MEETING SPACE LEVEL 2

- Athens
- Augusta
- Macon
- Valdosta
- Savannah Room
- Hospitality Suites
- Garden Courtyard



ROOM DIMENSIONS & SEATING CAPACITY

	SQ FEET	SQ METERS	DIMENSIONS	HEIGHT	BANQUET	THEATER	RECEPTION	CLASSROOM	U-SHAPE	SQUARE	8X10 BOOTH	6' TABLE TOPS
ATHENS	1,716	159	44' x 39'	9'	120	200	120	105	36	40	-	-
AUGUSTA	1,232	114	44' x 28'	9'	100	160	100	80	30	30	-	-
MACON	1,232	114	44' x 28'	9'	100	160	100	60	30	30	-	-
VALDOSTA	1,188	110	44' x 27'	9'	90	160	100	60	30	30	-	-
SAVANNAH ROOM	2,016	187	72' x 28'	10'	160	200	150	90	-	60	-	-
SAVANNAH 1	672	62	24' x 28'	10'	50	96	50	30	18	20	-	-
SAVANNAH 2	672	62	24' x 28'	10'	50	96	50	30	18	20	-	-
SAVANNAH 3	672	62	24' x 28'	10'	50	96	50	30	18	20	-	-
HOSPITALITY SUITE 201	650	60	-	-	-	-	-	-	-	-	-	-
HOSPITALITY SUITE 203	458	43	-	-	-	-	-	-	-	-	-	-
GARDEN COURTYARD	17,000	1,579	160' x 106'	25'	300	60*	500	-	-	-	-	-

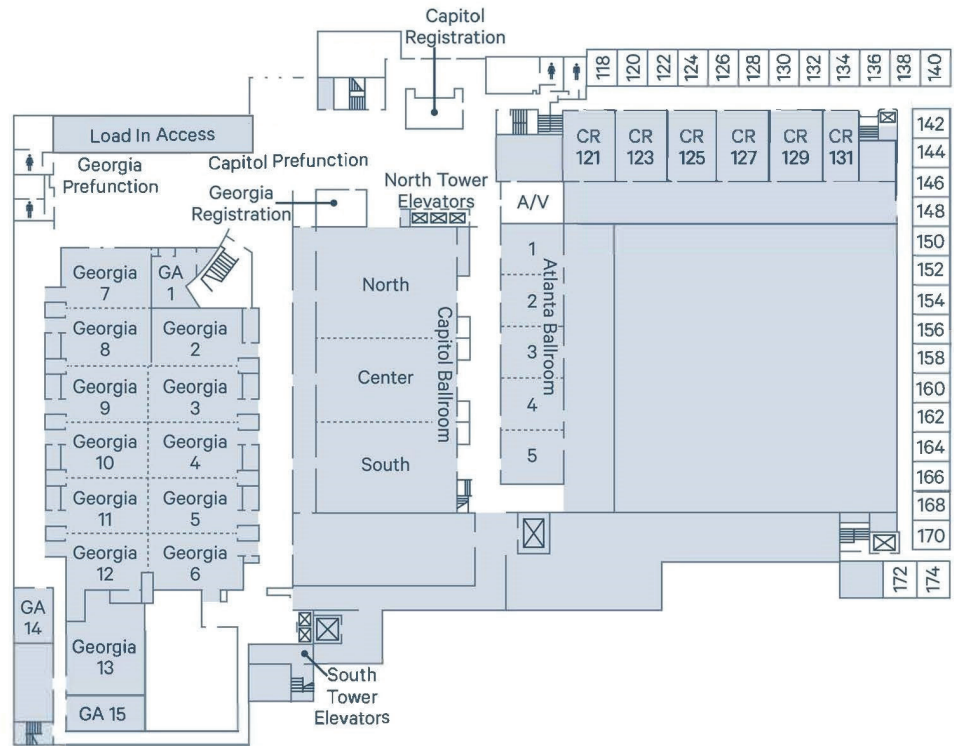
Meeting room sets reflect basic audio/visual consisting of a screen and a projector. This document contains approximate measurements and square footage that are for illustrative purposes only. We cannot guarantee the floor plan accuracy or completeness, therefore encourage you to review the space to make sure it is suitable for your event.



**COURTLAND GRAND
HOTEL**

MEETING SPACE LEVEL 1

- Registration Desks
- Atlanta Pre-function
- Atlanta Ballroom
- Capitol Pre-Function
- Capitol Ballroom
- Georgia Pre-function
- Georgia Hall
- Conference Rooms



ROOM DIMENSIONS & SEATING CAPACITY

	SQ FEET	SQ METERS	DIMENSIONS	HEIGHT	BANQUET	THEATER	RECEPTION	CLASSROOM	U-SHAPE	SQUARE	8X10 BOOTHES	6' TABLE TOPS
ATLANTA BALLROOM	4,160	386	130' x 32'	12'	310	440	360	260	-	-	22	40
ATLANTA BALLROOM 1-5, EACH	832	77	26' x 32'	12'	50	77	60	48	24	30	-	-
CAPITOL BALLROOM	9,590	891	137' x 70'	18'	640	1,290	900	450	-	-	57	57
CAPITOL NORTH	3,990	371	57' x 70'	18'	250	540	350	200	60	68	24	46
CAPITOL CENTER & SOUTH, EACH	2,800	260	40' x 70'	-	200	400	360	168	50	60	20	40
CAPITOL PREFUNCTION	4,486	417	-	10'	-	-	-	-	-	-	-	-
GEORGIA HALL (2-12)	12,303	1,143	160' x 76.9'	10'	850	-	1,400	-	-	-	98	130
GEORGIA 1	630	192	30' x 21'	10'	-	-	-	-	-	-	-	-
GEORGIA 2	1,125	343	25' x 45'	10'	100	70	110	54	30	36	-	-
GEORGIA 3-6, EACH	1,215	370	27' x 45'	10'	100	168	110	60	36	40	-	-
GEORGIA 7-12	1,053	98	27' x 39'	10'	50	70	110	54	24	36	-	-
GEORGIA 13	1,365	127	39' x 35'	10'	100	170	140	70	24	36	-	-
GEORGIA 14	442	41	26' x 17'	10'	20	20	35	-	-	-	-	-
GEORGIA 15	330	31	24.5' x 13.5'	-	-	-	-	-	-	-	-	-
GEORGIA PREFUNCTION	6,788	631	-	-	-	-	-	-	-	-	-	20
CONFERENCE ROOMS 121-129	600	56	24' x 25'	10'	-	12	-	6	-	-	-	-
CONFERENCE ROOMS 131	288	27	12' x 24'	10'	-	-	-	-	-	-	-	-

Meeting room sets reflect basic audio/visual consisting of a screen and a projector. This document contains approximate measurements and square footage that are for illustrative purposes only. We cannot guarantee the floor plan accuracy or completeness, therefore encourage you to review the space to make sure it is suitable for your event.



COURTLAND GRAND
HOTEL

SUITES OVERVIEW

ROOMS AT A GLANCE

Kings: 306

Doubles: 400

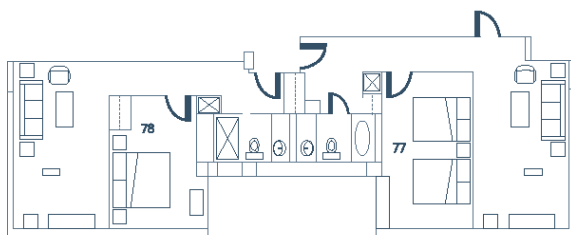
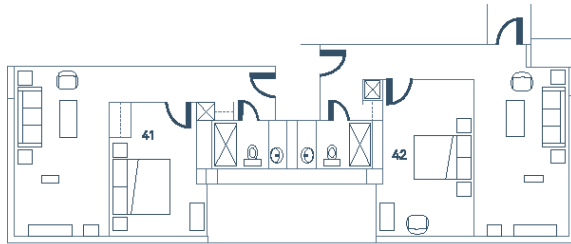
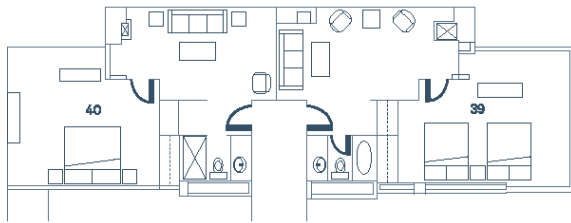
Suites: 57

Bi-level Presidential: 2

Executive Suite: 7

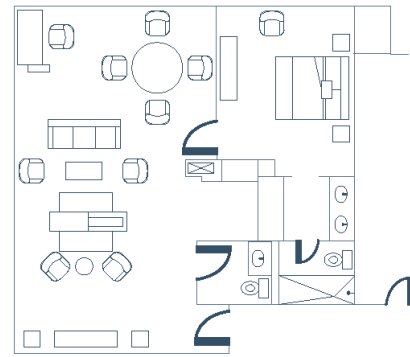
Corner Suites: 45

Hospitality Suites: 3



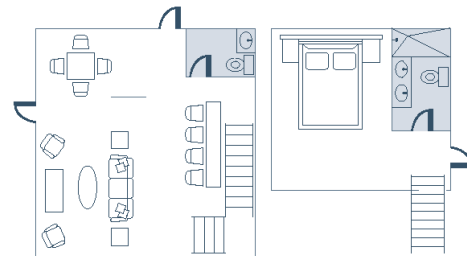
CORNER SUITES- KING OR DOUBLE QUEEN

Corner Suites Include Separate Bedroom and Living Room
Location: North Tower, 5th - 11th Floors; South Tower, 5th - 12th Floors
Size: 562 - 824 Sq Feet
Number Available: 31 King, 14 Double Queen



EXECUTIVE SUITE

Executive Suite Includes Separate Bedroom, Two Living Rooms,
Dining Room for 4, Wet Bar and 1.5 Bath
Location: North Tower, 5th - 11th Floors
Size: 946 Sq Feet
Number Available: 7



BI-LEVEL PRESIDENTIAL SUITE

Bi-Level Suite Includes Separate Bedroom, Living Room,
Dining Room for 6, Wet Bar and 1.5 Bath
Location: North Tower, 3rd Floor
Size: 1,009 Sq Feet
Number Available: 2