



An Iconic Resort Above the Bay



CLAREMONT
RESORT & CLUB

Property Overview



CLAREMONT
RESORT & CLUB

Overview

- **Claremont Resort & Club** is nestled on 22 acres in the Berkeley Hills, offering sweeping views of San Francisco Bay with easy access to Oakland, Berkeley, and San Francisco.
- A true Bay Area destination resort, the Claremont blends historic charm with refreshed luxury featuring :
 - 276 rooms and suites
 - 30,000+ square feet of flexible indoor & outdoor event space
 - Full-service spa, tennis, pickleball
 - A full-service spa, tennis and pickleball, three pools, and the Claremont Club with a state-of-the-art fitness experience





Accommodations

- The resort offers 225 guestrooms and 51 suites, blending historic elegance with refreshed, contemporary comfort.
- Many rooms offering sweeping views of the San Francisco Skyline, Bay and surrounding hillsides.
- Easy access to dining, spa services , the Fitness Club, and versatile meeting spaces.
- From Classic rooms to expansive suites with inviting sitting areas and enhanced layouts for work and relaxation

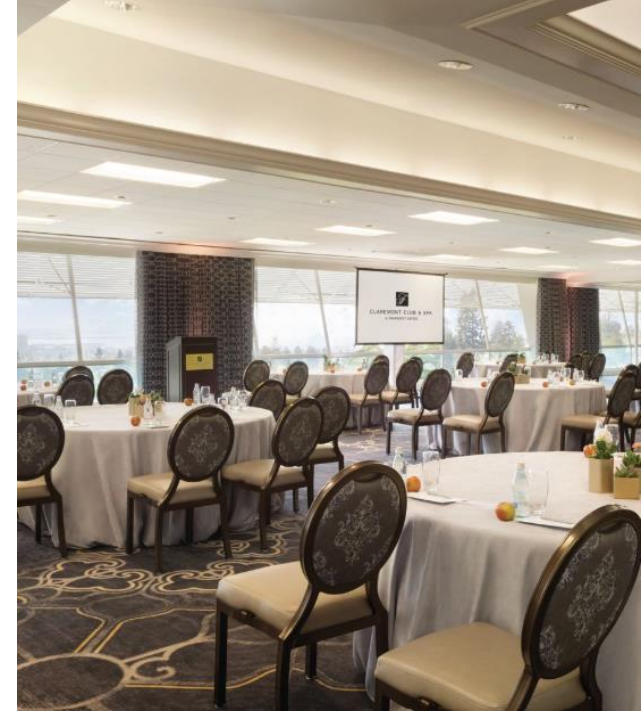


CLAREMONT
RESORT & CLUB

Dining

- **Limewood Bar & Restaurant** – Enjoy award-winning cuisine by Chef Joseph Paire in a vibrant, casual setting. Sip cocktails or dine on the hillside terrace with breathtaking San Francisco skyline views
- **East Bay Provisions** – A gourmet café offering artisan coffee, handcrafted pastries, local wines, and elevated California flavors—perfect for a relaxed, indulgent break
- **Lobby Lounge & Bar** – Historic elegance meets modern sophistication. Savor craft cocktails, light bites, or celebratory champagne while taking in stunning Bay views





Meeting / Event Facilities

- **Grand Ballrooms:** The Empire Ballroom offers abundant natural light. Both ballrooms provide flexible layouts and capacity for hundreds of guests.
- **Meeting & Boardrooms:** Over 20 meeting rooms and private boardrooms accommodate groups from small team sessions to larger breakout meetings, all with modern technology and customizable setups.
- **Intimate & Specialty Spaces:** Garden Room, Lanai, and Alumni Room offer refined settings for focused discussions or private luncheons.
- **Outdoor Options:** Scenic terraces and landscaped grounds provide inspiring surroundings for networking or reception events.

Spa

- **Serene Bay-View Retreat** – The spa offers a tranquil sanctuary perched above the San Francisco Bay, with panoramic views that set the tone for relaxation.
- **32 Luxurious Treatment Rooms** – Including couples' rooms, designed for massages, facials, body therapies, and holistic treatments.
- **Tailored Treatments** – Choose from a curated menu of restorative therapies to rejuvenate body, mind, and spirit.
- **Premium Amenities** – Relax in spa lounges, steam rooms, and eucalyptus-infused relaxation areas, complete with refreshments and attentive service.

[Spa Menu LINK](#)



The Club

- **State-of-the-Art Fitness & Wellness:** Enjoy full access to our modern fitness center, group classes, and wellness programs designed to keep you active and energized.
- **Heated Outdoor Pools:** Three year-round saline pools perfect for laps, recreation, or relaxing in a resort-style setting
- **Tennis & Pickleball Courts:** 8 outdoor lighted tennis courts and 4 outdoor lighted pickleball with private lessons, clinics, and social play opportunities for all skill levels
- **Expert-Led Classes:** 70+ Group Fitness classes such as Yoga, cycling, swim instruction, and other guided programs to support health, fitness, and skill development.



Ideal Destination Location

- Nestled in the picturesque Oakland Hills, offering stunning views of the San Francisco Bay.
- Just 25 minutes from Oakland International Airport (OAK) and 40 minutes from San Francisco International Airport (SFO).
- Nearby dining and social spots in Berkeley's gourmet neighborhoods, from casual to upscale experiences, complement your stay
- Explore local attractions like artisan bookstores, wine lounges, hiking trails, and regional parks — perfect for team outings or leisure time.
- Acts as a strategic hub for day trips to San Francisco, Napa/Sonoma wine country, and Silicon Valley.

Seasonality

December - February: Low Season.

- Mild winter climate compared to most U.S. destinations
- Avg Temps: 58–61°F days | cozy evenings with fire pits and spa escapes

March – April & October – November : Shoulder Season.

- Crisp mornings, sunny afternoons, and spectacular Bay views
- Avg Temps: 63–71°F — comfortable all day long

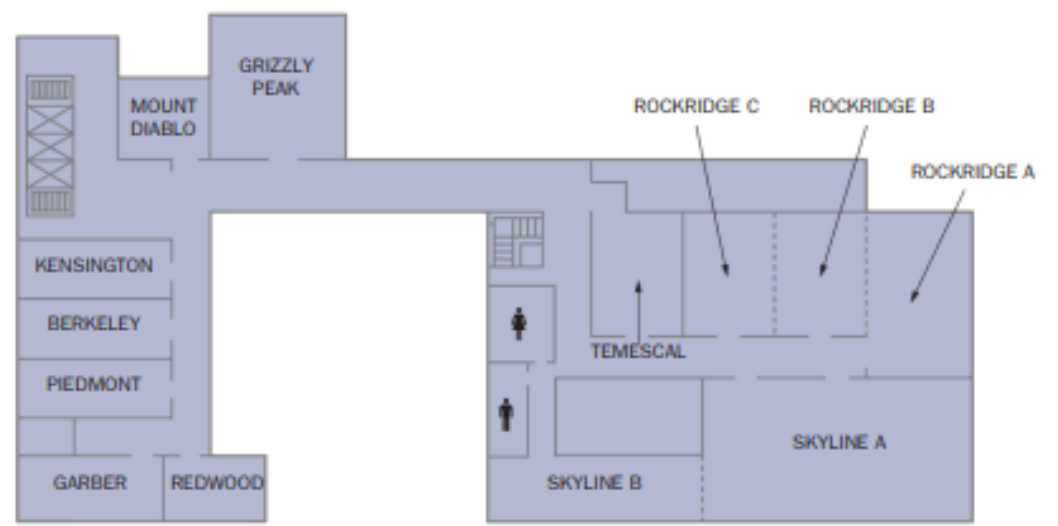
May - September: High Season.

- Warm, dry days with lots of sunshine. Prime time for Bay Area travel and outdoor experiences
- Avg Temps: 70–76°F daytime | cool evenings

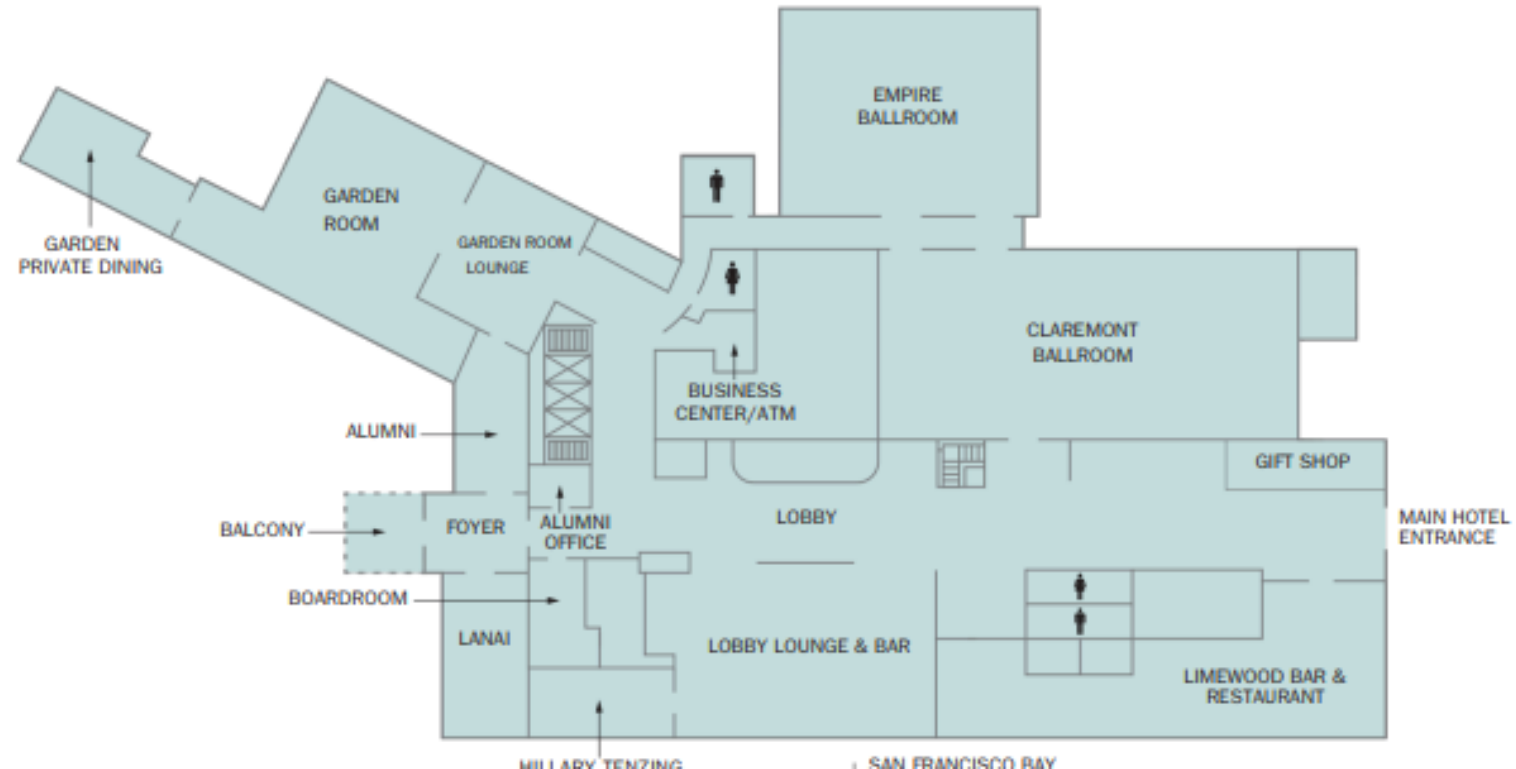


Special Events Floor Plans

MEZZANINE



LOBBY LEVEL



Capacities

	OVERALL DIMENSIONS		SQUARE		HEIGHT		CAPACITIES									
	FEET	METERS	FEET	METERS	FEET	METERS	THEATER	CHEVRON THEATER	CLASS-ROOM	CHEVRON CLASS-ROOM	ROUNDS OF 12	STAGGERED ROUNDS OF 12	CONFERENCE	U-SHAPE	HOLLOW SQUARE	COCKTAIL
MEZZANINE																
BERKELEY	31' x 14'	9 x 4	439	41	8' 7"	2.6	-	-	-	-	-	-	12	-	-	-
GARBER	15' x 26'	5 x 8	355	33	8' 6"	2.6	20	-	12	-	24	-	12	9	12	25
GRIZZLY PEAK	33' x 27'	10 x 8	726	67	8' 9"	2.7	35	-	20	-	36	-	14	15	18	60
KENSINGTON	31' x 15'	9 x 5	443	41	9' 5"	2.9	-	-	-	-	-	-	18	-	-	-
MOUNT DIABLO*	17' x 20'	5 x 6	320	30	15'	4.6	-	-	-	-	-	-	8	-	-	15
PIEDMONT	31' x 14'	9 x 4	427	40	8' 8"	2.7	24	-	12	-	24	-	14	-	-	20
REDWOOD	15' x 20'	5 x 6	279	26	8' 6"	2.6	15	-	9	-	12	-	10	-	-	25
ROCKRIDGE A	43' x 24'	13 x 7	994	92	9'	2.7	90	-	48	-	72	-	30	30	36	90
ROCKRIDGE B	30' x 20'	9 x 6	589	55	9'	2.7	48	-	24	-	24	-	20	21	16	60
ROCKRIDGE C	29' x 20'	9 x 6	583	54	9'	2.7	42	-	24	-	24	-	20	21	-	60
ROCKRIDGE A & B	43' x 44'	13 x 13	1,583	147	9'	2.7	100	-	69	-	132	-	42	36	36	150
ROCKRIDGE B & C	29' x 40'	9 x 12	1,172	109	9'	2.7	90	-	48	-	72	-	26	30	36	120
ROCKRIDGE A, B & C	43' x 64'	13 x 20	2,166	201	9'	2.7	160	-	96	-	132	132	48	51	60	200
SKYLINE A	43' x 69'	13 x 21	2,733	254	12' 10"	3.9	288	182	144	-	180	216	50	63	72	250
SKYLINE B	22' x 50'	7 x 15	846	79	12' 10"	3.9	64	-	42	-	48	-	30	28	32	75
SKYLINE A & B	43' x 112'	13 x 34	3,579	332	12' 10"	3.9	312	-	-	-	228	-	50	-	-	325
TEMESCAL	42' x 23'	13 x 7	772	72	15'	4.6	64	-	30	-	48	-	24	27	30	70
LOBBY LEVEL																
ALUMNI	46' x 19'	14 x 6	692	64	9' 8"	3	42	-	24	-	48	-	24	27	24	50
LANAI	51' x 20'	16 x 6	970	90	10' 1"	3.1	90	-	50	-	48	-	40	39	42	80
ALUMNI/LANAI	26' x 27'	8 x 8	602	56	19' 8"	6	-	-	-	-	-	-	-	-	-	-
FOYER & BALCONY	-	-	2,680	249	19' 8"	6	-	-	-	-	-	-	-	-	-	-
BOARDROOM	31' x 13'	9 x 4	397	37	9' 9"	3	21	-	12	-	24	-	16	-	-	20
CLAREMONT BALLROOM	62' x 85'	19 x 26	4,928	458	9'	2.7	308	198	192	-	372	-	74	78	84	480
EMPIRE BALLROOM	64' x 64'	20 x 20	4,058	377	12' 9"	3.9	450	310	230	200	348	300	56	54	84	480
HILLARY TENZING ROOM	44' x 18'	13 x 5	801	74	10' 1"	3.1	-	-	-	-	-	-	14	-	-	30
LOBBY LOUNGE & BAR	-	-	2,416	224	-	-	-	-	-	-	-	-	-	-	-	-
GARDEN ROOM	-	-	4,344	403	-	-	100	80	18	-	144	144	20	-	24	200
PRIVATE DINING ROOM	49' x 24'	15 x 7	1,157	107	15'	4.6	90	-	21	-	60	-	24	21	24	75
OUTSIDE SPACE																
BAYVIEW TERRACE	48' x 61'	15 x 19	2,008	187	-	-	140	-	-	-	144	110	-	-	-	175





- E Elevators (E1, E2)
- 1. Main Hotel Parking Entrance
- 2. Valet Parking
- 3. Self Parking
- 4. Bee Hives
- 5. California Native Gardens
- 6. Hotel Front Door (Lobby level)
- 7. Valet Booth (Lobby level)
- 8. Limewood Bar & Restaurant
- 9. Lobby Lounge & Bar
- 10. Spa at Claremont & Gift Shop (Spa level)
- 11. Carriage Entrance & East Bay Provisions (Garden level)
- 12. Spa Wing Guest Room Entrance / ADA Access (Garden Level)
- 13. Club Entrance (Locker Rooms, Indoor Whirlpools, Saunas, Steam Rooms - lower level)
- 14. Cardio & Weight Fitness Center (via Club Entrance)
- 15. Spin Studio (via Club Entrance)
- 16. Group Fitness & F.I.T. Studio (via Club Entrance)
- 17. Lap Pool
- 18. Main Pool
- 19. Outdoor Whirlpool
- 20. Children's Activity Pool
- 21. Bayview Terrace
- 22. Kids' Club
- 23. Domingo Avenue Entrance
- 24. Lending Library
- 25. Lending Library
- 26. Front Lawn
- 27. Front Desk
- 28. Concierge
- 29. Sunset Terrace
- 30. F.I.T. Yard
- 31. Tennis Courts (T1, T2, T3, T4)
- 32. Tennis Courts (T5, T6, T7, T8)
- 33. Pickleball Courts (A, B, C, D)
- 34. EV Charging Station
- 35. Business Center

Property Map



RACQUET SPORTS

Led by our Racquet Sports Specialists, experience a Tennis or Pickleball lesson, Round Robin and/or Group tournament.



GROUP ADVENTURES & EXPERIENCES



COOKING DEMO CLASS

Ready to showcase your cooking skills? From interactive cooking demons to hands-on cooking classes, your group will experience a fantastic culinary showcase and work in camaraderie

DELICIOUS DESSERT DASH

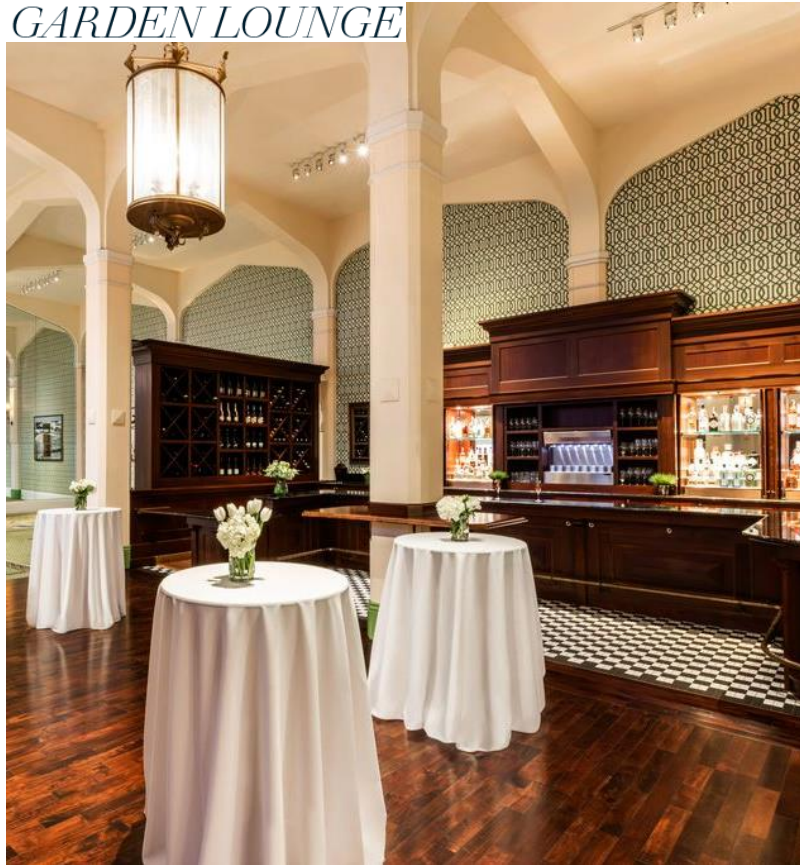
Teams will compete to build the best dessert, serving area, and marketing presentation in a series of fun group challenges.



Claremont Resort & Club is easily accessible through two international airports.

- Oakland International – OAK**
 - 14 miles (about 23-26 min drive)
- San Francisco International – SFO**
 - 25-26 miles (about 30-35 min drive)

GARDEN LOUNGE



CLAREMONT BALLROOM



EMPIRE BALLROOM



SKYLINE ROOM



GARDEN ROOM



Gallery

GRIZZLY PEAK



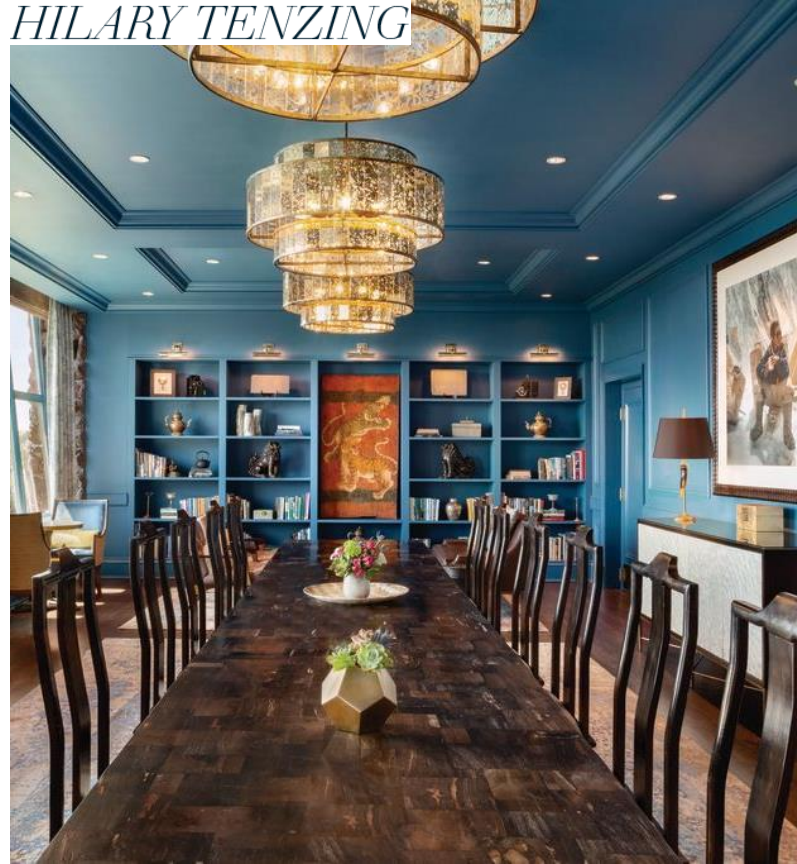
BAYVIEW TERRACE



LANAI



HILARY TENZING



SECRET GARDEN



Gallery

KENSINGTON



REDWOOD



ROCKRIDGE



ALUMNI



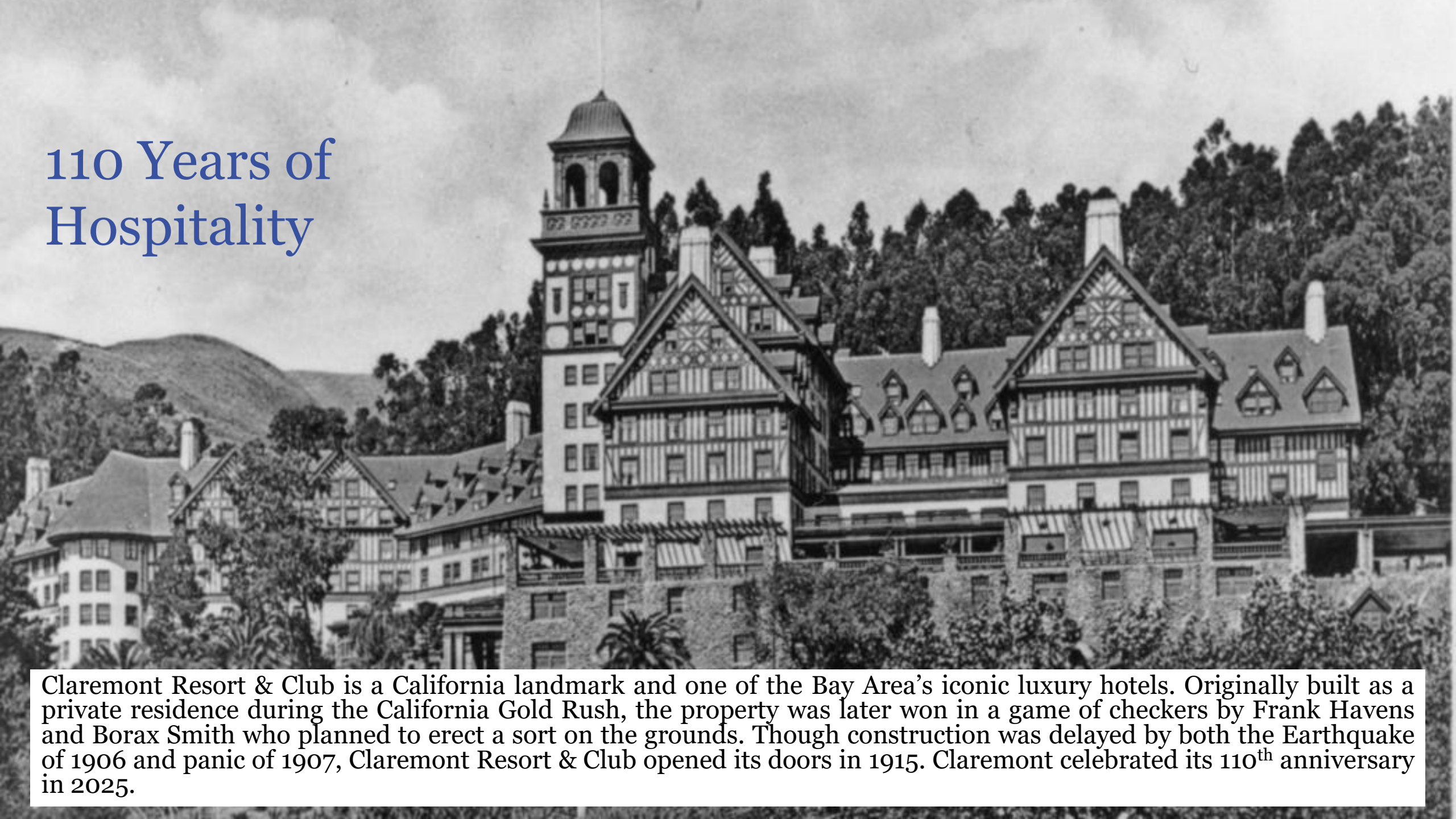
Gallery



Gallery



110 Years of Hospitality



Claremont Resort & Club is a California landmark and one of the Bay Area's iconic luxury hotels. Originally built as a private residence during the California Gold Rush, the property was later won in a game of checkers by Frank Havens and Borax Smith who planned to erect a sort on the grounds. Though construction was delayed by both the Earthquake of 1906 and panic of 1907, Claremont Resort & Club opened its doors in 1915. Claremont celebrated its 110th anniversary in 2025.