



Historic Hotel on the Magnificent Mile

Located on Chicago's iconic Magnificent Mile, the Warwick Allerton Hotel is mere minutes from the heart of downtown and the Windy City's most renowned landmarks, attractions, nightlife and popular events.



Guest Rooms

The Warwick Allerton - Chicago offers 443 sophisticated guestrooms including 59 spacious suites ensuring comfortable accommodations while visiting Chicago.

Every guestroom is well-appointed with luxurious sheets, ultra plush pillows, Italian marble bathrooms, bath amenities by Gilchrist & Soames, flat screen television with on-demand movies and premium channels, in-room safes, hairdryers, irons/ironing boards, and in-room complimentary coffee and tea.



Guest Services

Built in 1924 and declared an official Chicago Historic Landmark in 1998, the Warwick Allerton combines stunning architecture from Chicago's Jazz Era and newly renovated rooms to create a comfortable backdrop to any business or leisure trip.

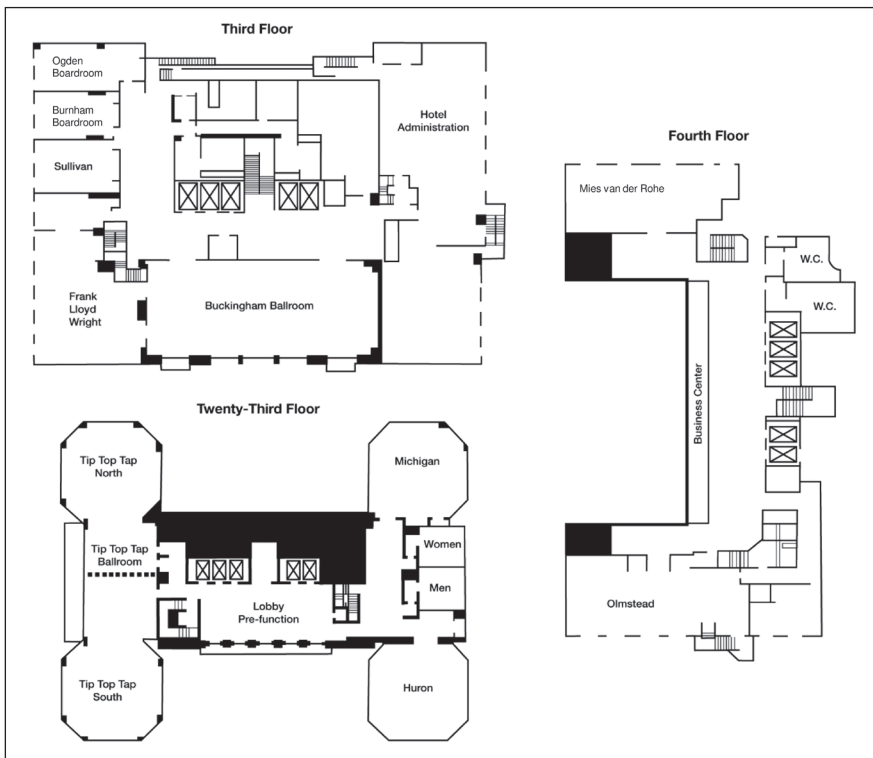
Stay on top of work with our 24Hour Business Centre that includes computers, printer, copier, and fax machine.

Same-Day Dry Cleaning and our State-of-the-Art Fitness Centre will keep you looking sharp and on track with your daily routine.

Hotel Features



- | | |
|------------------------|---|
| High Speed Internet | On-Site Meeting Facilities |
| 24-Hour Fitness Centre | 24-Hour Business Centre |
| Valet Parking | Multilingual Staff |
| Same-Day Dry Cleaning | Grab N Go Options Breakfast/Lunch Daily |
| VIP Guest Room Suites | Lounge Tues-Sat with Daily Happy Hour |



Meeting & Event Spaces

For business or social gatherings, the Warwick Allerton is ready to host an unforgettably successful event.

With over 12,000 square feet of versatile meeting and event space, full catering and in-house audiovisual services, this historic landmark is perfectly equipped to host glamorous weddings, corporate holiday parties, and much more!

The meeting rooms feature beautiful arched windows allowing natural light in and showcasing spectacular views.

Our historic Tip Top Tap Ballroom on the 23rd Floor provides magnificent views of the city and of our legendary neon sign that has become an iconic piece of the Chicago skyline.

Event Space Capacity

ROOM	SQ M/FT	DIMENSIONS	CEILING	TV	AV	TABLES	CHAIRS	BAR	STAIRS
Buckingham Ballroom	195.1 / 2100	34x65	18	60	100	140	200	45	200
Frank Lloyd Wright	97.9 / 1054	34x31	7	18	40	70	60	25	60
Sullivan	45.2 / 486	18x27	7	15	15	30	20	15	20
Burnham Boardroom	40.1 / 432	16x27	7	10	-	-	-	10	-
Ogden Boardroom	43.2 / 465	15x31	7	10	-	-	-	10	-
Mies Van Der Rohe	65.0 / 700	20x35	7	20	36	40	50	28	50
Olmstead	74.8 / 805	23x35	7	18	40	40	50	28	50
Tip Top Tap Ballroom	318.1 / 3424	107x32	25	-	160	250	270	-	300
Tip Top Tap North	148.6 / 1600	50x32	25	25	66	100	120	25	120
Tip Top Tap South	169.5 / 1824	57x32	25	25	102	110	140	25	140
Huron	95.1 / 1024	32x32	23	30	50	70	85	25	80
Michigan	95.1 / 1024	32x32	8	25	40	60	60	25	70

Warwick Allerton - Chicago

701 N. Michigan Avenue
Chicago, IL 60611 - USA

Reservations +1 (312) 440-1500
info.chicago@warwickhotels.com
warwickhotels.com/
allerton-hotel-chicago

Amadeus WKCHIEBB - Apollo/Galileo WK98016
Sabre WK10476 - Worldspan WK3771

