

The logo for Crystal Springs Resort is centered at the top. 'Crystal' is written in a large, elegant, white cursive font. Below it, 'SPRINGS' and 'RESORT' are written in a smaller, white, all-caps sans-serif font, stacked vertically.

Crystal  
SPRINGS  
RESORT

# MINERALS HOTEL

— VENUES —



# MINERALS HOTEL

A collection of recreational amenities, coupled with a variety of both casual & formal meeting venues.

- 1 Ballroom
- 4 Break-Out Rooms
- 1 Restaurant
- Tradeshow + Competition Space

The Canyon Room — coming soon. This expansive, elegant meeting and banquet venue will represent the Resort's largest indoor multi-purpose space. The new offering will prove very attractive to groups requiring space for large-scale gatherings of 400+ persons.

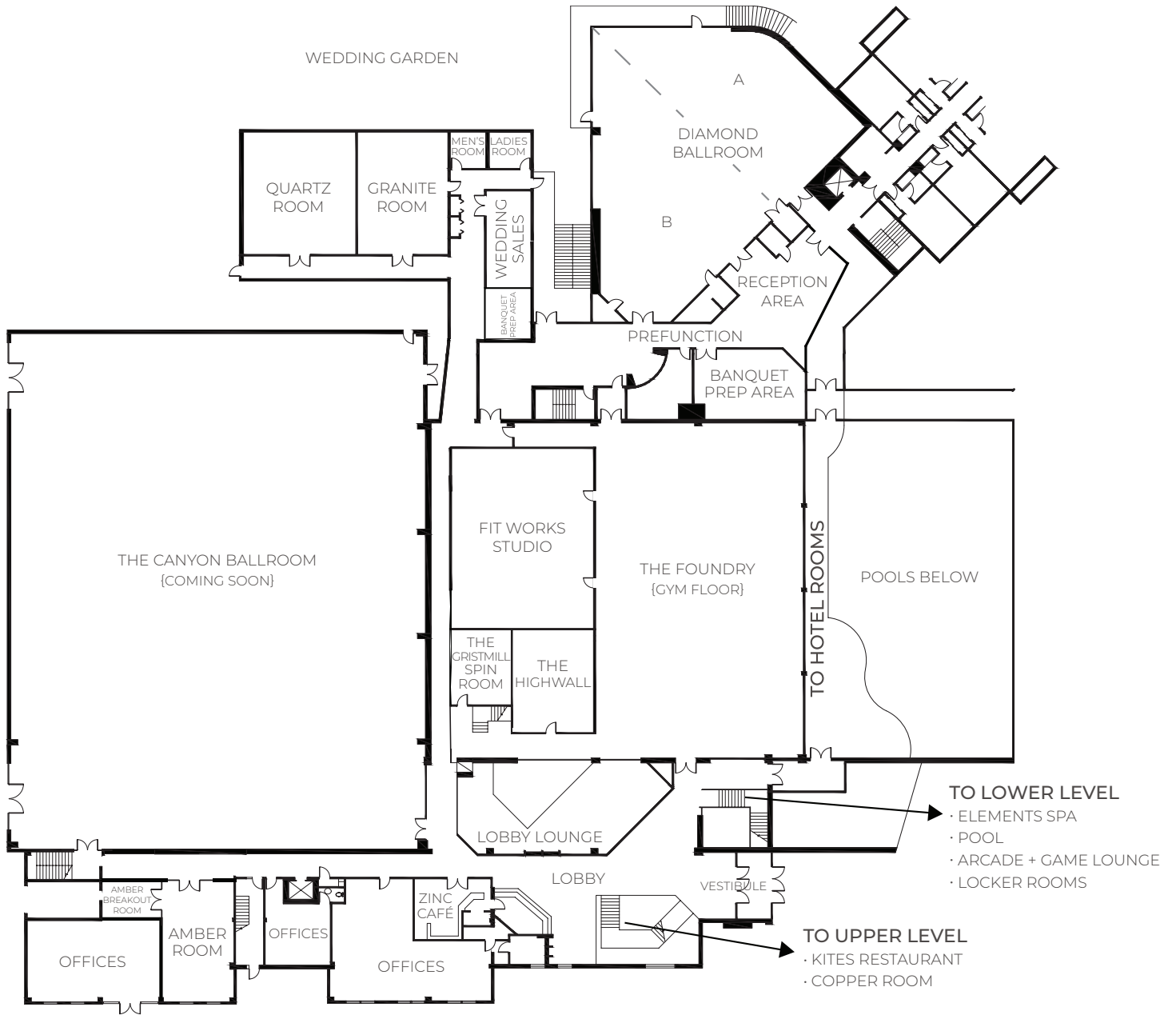
## MEETING + BANQUET FACILITIES

VENUE	DIMENSIONS W' X L' X H'	SQUARE FEET	CLASSROOM	RECEPTION	BANQUET
Diamond Ballroom	96' x 72' x 12'	4,200	225	350	300 / 200 D
Diamond Ballroom A	60' x 33' x 12'	1,400	70	100	110 / 60 D
Diamond Ballroom B	72' x 50' x 12'	2,800	80	150	120 / 80 D
Quartz Room	39' x 32' x 8'	1,250	45	60	70 / 50 D
Granite Room	39' x 25' x 8'	975	30	40	50 / 30 D
Copper Room	60' x 45' x 12'	2,700	100	170	140 / 80 D
Amber Room	17' x 31' x 9'	527	24	25	30
Amber Room Breakout	9' x 12' x 9'	108			
The Canyon Ballroom	93' x 118' x 37'	10,974	360	500	450 / 420 D
Kites Restaurant	80' x 45' x 10'	3,600		200	160
Kites' Terraces {5 Levels, Outdoor}	25' Wide	1,900		50	40
Sweetgrass Pavillion	85' x 43' x 20'	7,116	200		200 / 150D
The Wedding Garden	35' x 70'	2,450		70	60
Cocktail Patio	61' x 40'	2,440		225	80
Moonshine + The Farm Stand	40' x 20'	800		40	

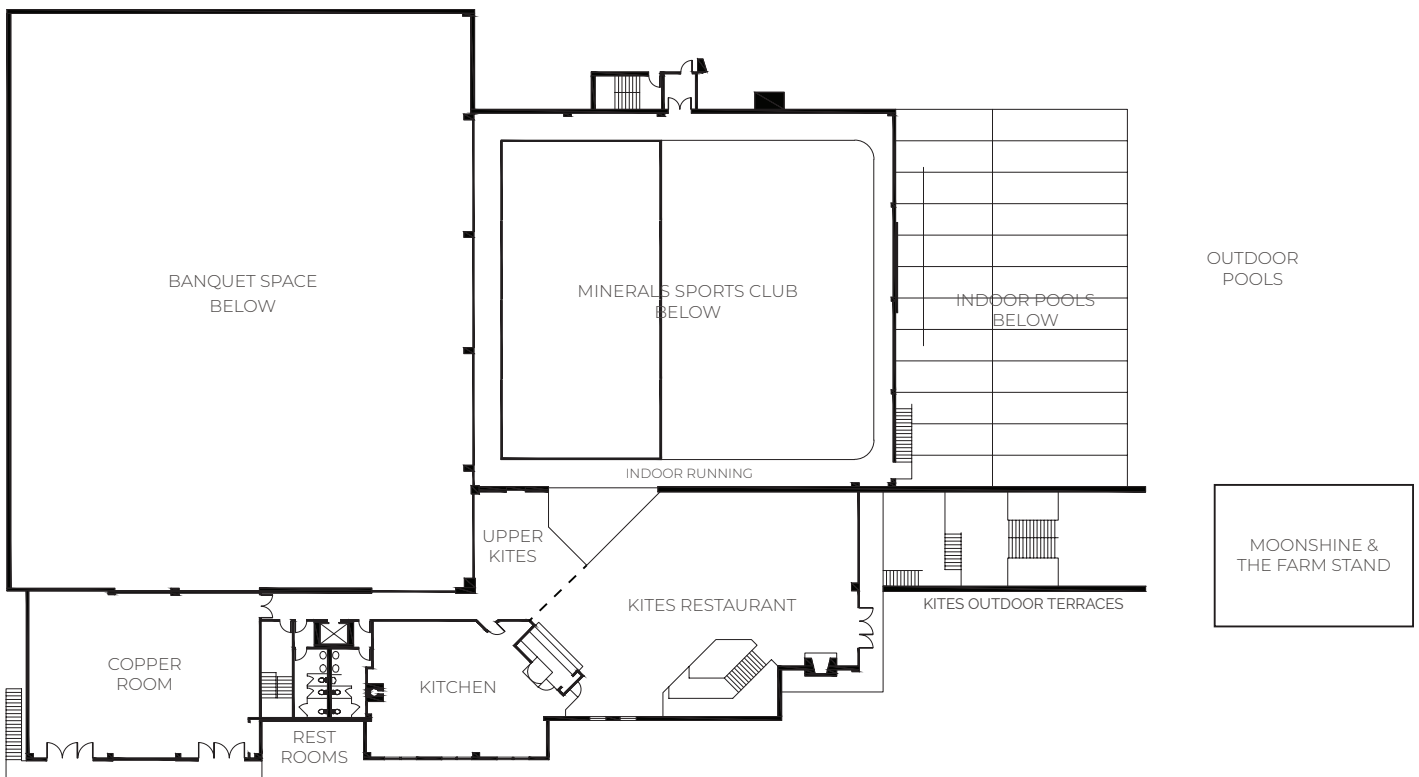
Please note that capacities are subject to change based on set-up requirements. {D = Dance Floor}



# MINERALS HOTEL — MAIN LEVEL



# MINERALS HOTEL — SECOND LEVEL





*Crystal*  
SPRINGS  
RESORT

---

866.341.4553 | [TheCrystalSpringsResort.com](http://TheCrystalSpringsResort.com) | Sussex County, New Jersey

---